



## Thru-beam sensor receiver MV17/115/136



- Receiver
- Compact, versatile housing
- 360° high visibility LEDs
- 4-in-1 output (push-pull)
- 2 m cable length

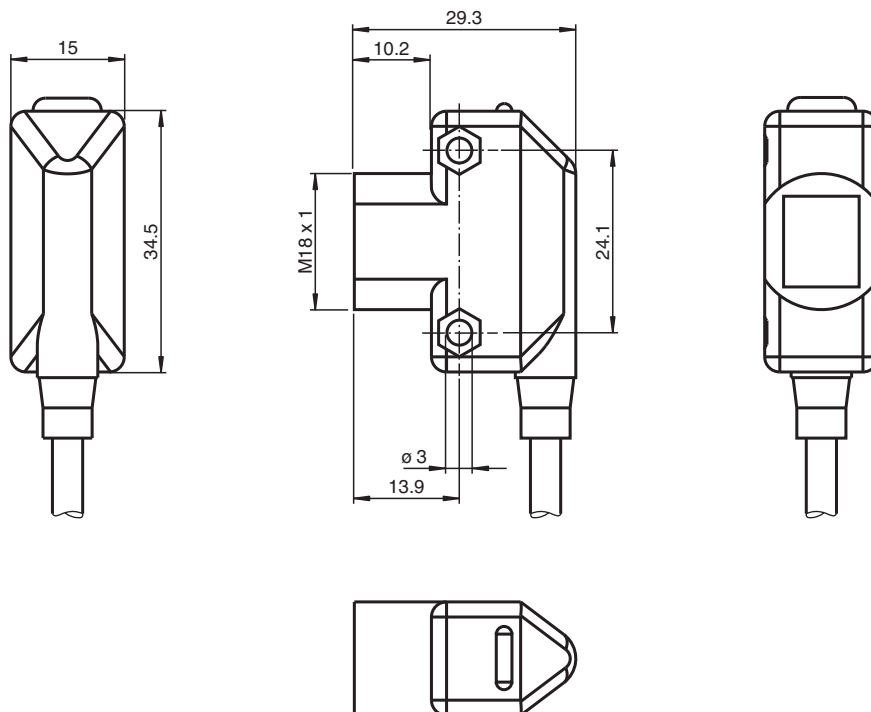
Thru-beam sensor receiver, small design, infrared, light-on/dark-on switching, push-pull output, cable



### Function

The ML17 sensor family offers diverse connection and installation options, which means that it can adapt to the most varied automation tasks. In addition to the usual fitting method using M4 screws, these sensors can also be installed by means of M18 threaded insert. All devices are equipped with a green Power On display and a yellow function display. These displays are arranged in such a way that they are clearly visible from different directions.

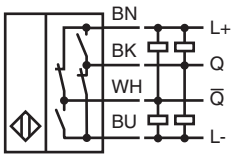
### Dimensions



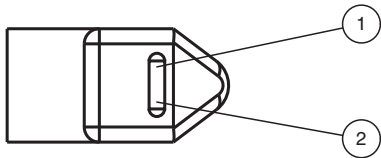
## Technical Data

<b>System components</b>		
Emitter		MD17/115
Receiver		MV17/115/136
<b>General specifications</b>		
Effective detection range		0 ... 15 m
Threshold detection range		20 m
Reference target		emitter
Light source		IREL
Light type		Infrared LED
Ambient light limit		≤ 10000 Lux
<b>Indicators/operating means</b>		
Operation indicator		LED green
Function indicator		LED yellow, lights up with receiver lit
<b>Electrical specifications</b>		
Operating voltage	U <sub>B</sub>	10 ... 30 V DC , class 2
Ripple		max. 10 %
No-load supply current	I <sub>0</sub>	< 25 mA
Operating current	I <sub>B</sub>	100 mA max per output
Time delay before availability	t <sub>v</sub>	≤ 200 ms
<b>Output</b>		
Switching type		light/dark on
Signal output		2 push-pull (4 in 1) outputs, short-circuit protected, reverse polarity protected, overvoltage protected
Switching voltage		max. 30 V DC
Switching current		max. 100 mA
Voltage drop	U <sub>d</sub>	≤ 2 V DC
Switching frequency	f	150 Hz
Response time		≤ 3 ms
<b>Conformity</b>		
Product standard		EN 60947-5-2 IEC 60947-5-2
<b>Approvals and certificates</b>		
CE conformity		CE
UL approval		cULus
CCC approval		CCC approval / marking not required for products rated ≤36 V
<b>Ambient conditions</b>		
Ambient temperature		-20 ... 55 °C (-4 ... 131 °F)
Storage temperature		-20 ... 70 °C (-4 ... 158 °F)
<b>Mechanical specifications</b>		
Housing width		15 mm
Housing height		34.5 mm
Degree of protection		IP67
Connection		2 m fixed cable
<b>Material</b>		
Housing		ABS
Optical face		Acrylic
Mass		40 g

Connection



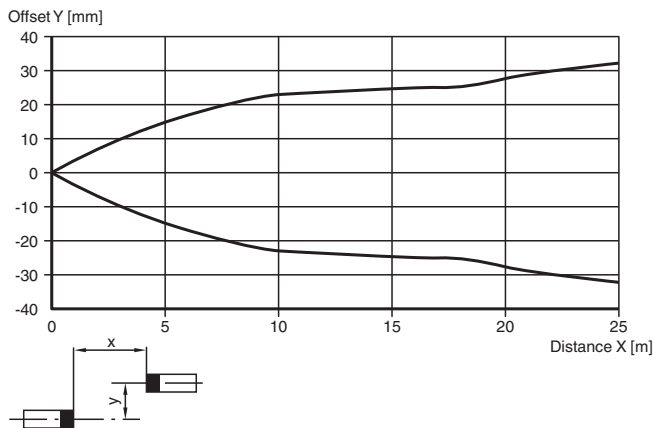
Indication



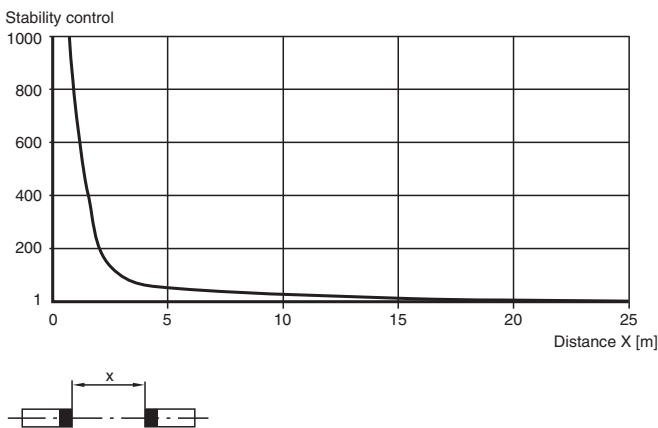
1	Signal display	yellow
2	Operating display	green

Characteristic Curve

Characteristic response curve




Relative received light strength



Accessories

	<b>OMH-ML17</b>	Mounting bracket
--	-----------------	------------------

Accessories

	OMH-ML17-1	Mounting bracket
---	------------	------------------

Release date: 2023-03-28 Date of issue: 2023-03-28 Filename: 905784\_eng.pdf

## Additional Information

### 4-in-1 Output

The 4-in-1 output automatically detects the connected load, so the output either sources or sinks current depending on the load. The light on/dark on switch on the housing selects normally open or normally closed mode. A single sensor can operate as NPN normally open, NPN normally closed, PNP normally open, or PNP normally closed.

